

Frequency Range: 2.0~50MHz

Application of Ceramic Resonator:

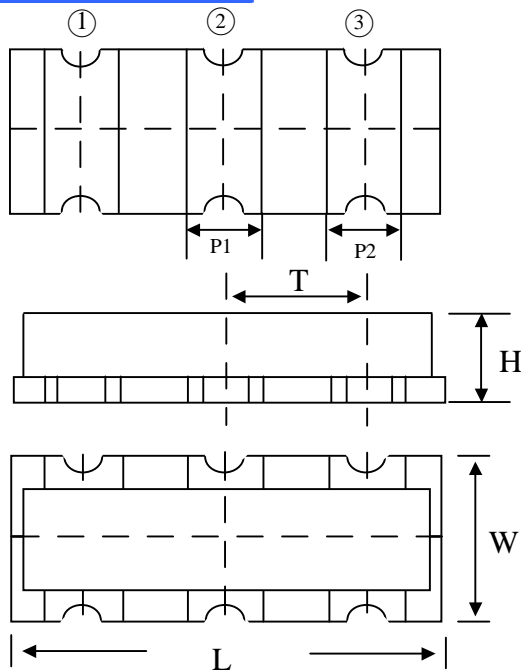
- Best choice for Remote control
- UPS
- Mouse



Electrical Specification:

Model	Frequency Range (MHz)	Frequency Accuracy (25°C)	Stability in Temperature (-20 ~ +80°C)	Aging For Ten Years (%)
NREZTTCC□MG	2.00 ~ 6.99	±0.5%	±0.3%	±0.3
NREZTTCS□MT	7.00 ~ 13.00	±0.5%	±0.3%	±0.3
NREZTTCV□MT	8.00 ~ 13.00			
NREZTTCS□MX	13.01 ~ 50.00	±0.5%	±0.3%	±0.3
NREZTTCV□MX	16.00 ~ 50.00			

DIMENSIONS:



Pin NO.	Pin Define
①	INPUT
②	GPOUND
③	OUTPUT

Code Model	DIMENSIONS (mm)					
	L	W	H	P1	P2	T
NRECC□(MG)	7.4±0.2	3.4±0.2	1.8±0.2	1.2±0.2	1.2±0.2	2.5±0.2
NRECV□(MT/MX)	3.7±0.2	3.1±0.2	1.2±0.2	0.9±0.2	0.7±0.2	1.5±0.2
NRECS□(MT/MX)	4.7±0.2	4.1±0.2	1.6±0.2	1.0±0.2	0.8±0.2	1.95±0.2

